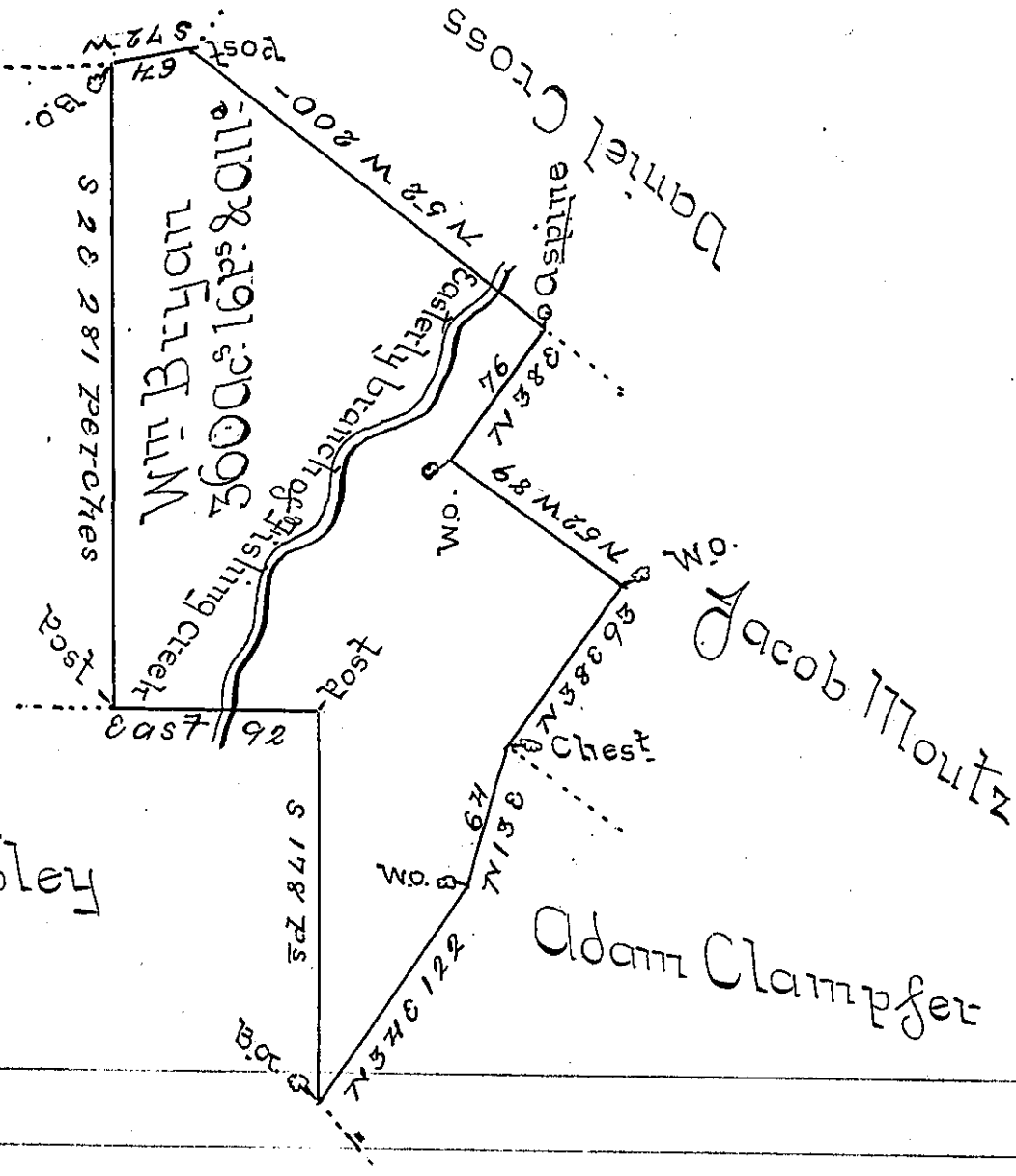


James Bryan

Conrad Appleman

Joseph Hubley



By Virtue of a Warrant dated 26<sup>th</sup> August 1793 Surveyed  
 the 26<sup>th</sup> of May 1800 unto W<sup>m</sup> Bryan the above described  
 Tract of Three hundred and Sixty Acres & 16 perches of Land  
 and Allowance Situated on an Easterly branch of Fishing  
 creek adjoining land of James Bryan in Luzerne County

By W<sup>m</sup> Montgomery D. S<sup>r</sup>

To Samuel Cochran Esq<sup>r</sup> }  
 Sur<sup>v</sup> Gen<sup>l</sup> of Pennsylv<sup>a</sup> }

IN TESTIMONY that the above is a copy of the original remaining on file in  
 the Department of Internal Affairs of Pennsylvania, made  
 conformably to an Act of Assembly approved the 16th day of  
 February, 1833, I have hereunto set my Hand and caused  
 the Seal of said Department to be affixed at Harrisburg,  
 this — sixth — day of — August — 1907. —

*James W. Fatta*  
 Secretary of Internal Affairs.